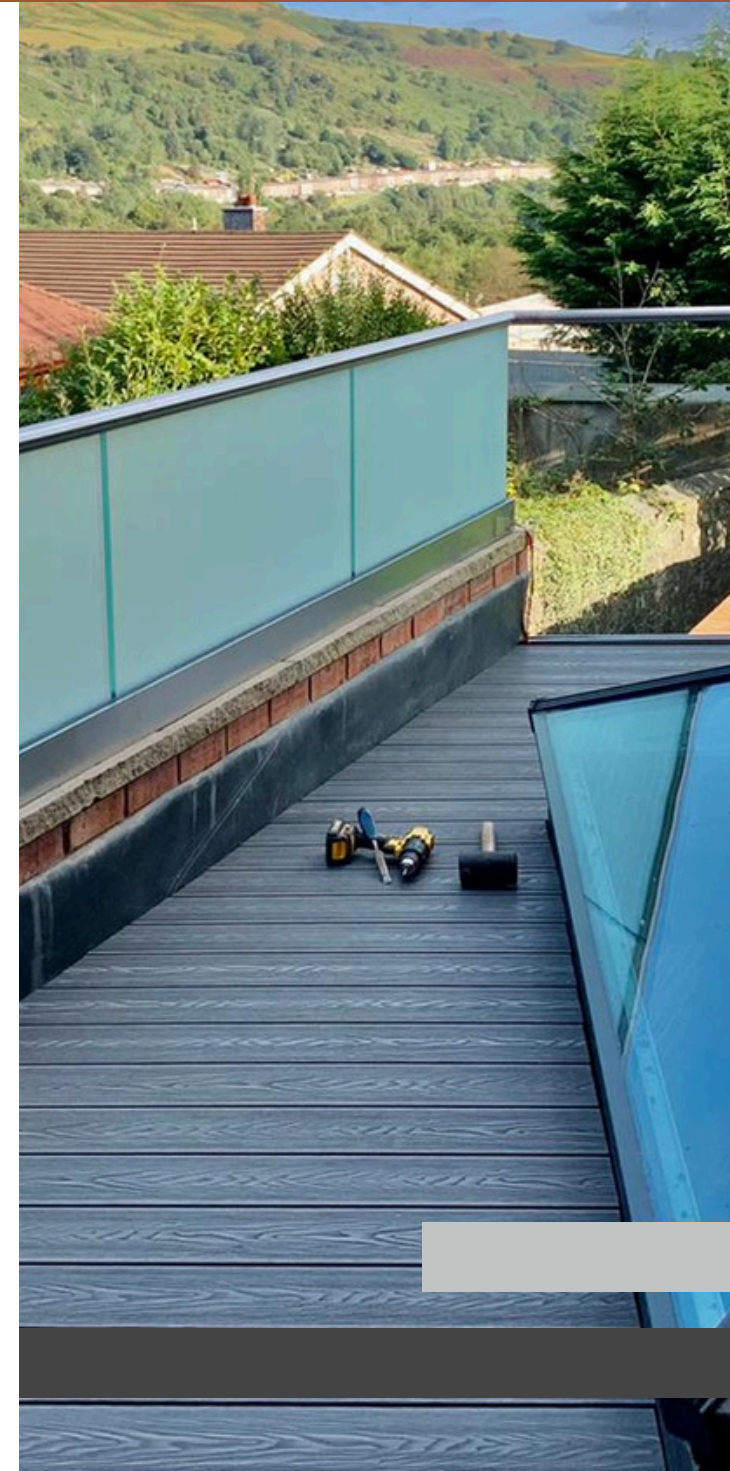




COMPOSITE DECKING INSTALLATION GUIDE



What is composite decking?

Composite Decking is a combination of recycled natural wood fibres (55%), recycled HDPE (35%) and additives moulded and then rolled to create a deep embossed wood grain decking board with a grooved reverse side.

Does composite decking have batch variation?

Whilst we ensure every individual order has batch matched board colouration, orders placed at different times may result in a different subsequent batch being purchased.

Why should I choose composite over timber?



Low Maintenance



Longer Lifespan



Slip Resistant



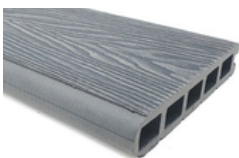
Increased Durability

What components are required to complete an install?

DenaDeck Board



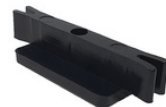
Bullnose Board



Edging Trims



T-Fixing Pack



Starter Clips



01



What tools will I need?



ELECTRIC SAW



SPIRIT LEVEL



SAFETY PPE



HAND DRILL



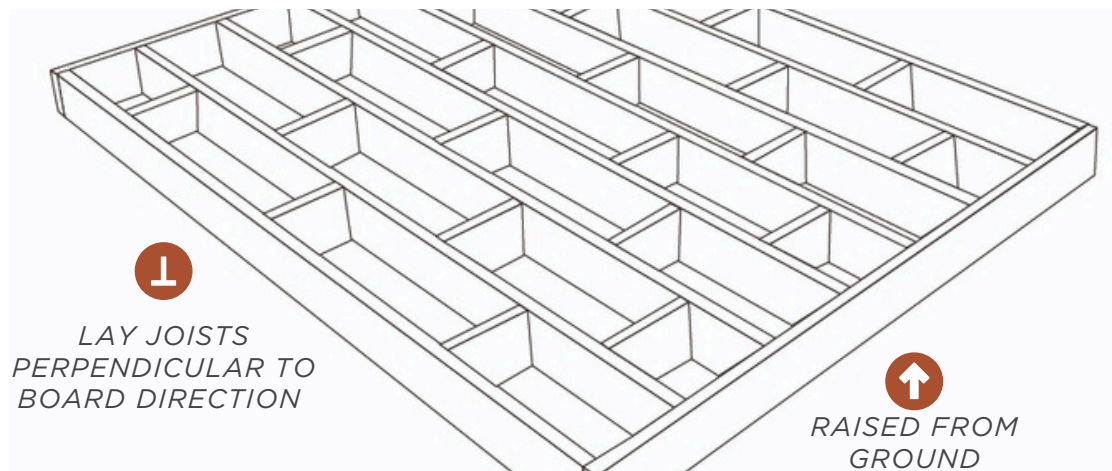
TAPE



SQUARE EDGE

What do I need to know before installing?

Decking joists should be installed on a suitable sub-base to support the chosen sub-frame - this should be raised off the ground 10mm to prevent subframe sitting in water for periods and allow ventilation for subframe to dry out as required. The ground beneath should have suitable drainage to prevent failure of the subframe and weed prevention membrane



How can I work out the number of boards

The number of boards will depend on the deck area and also on the size of boards being used. Measure the width and length of the area to be decked to achieve the square meterage needed.

Use the guide below to calculate the number of boards from this.

Range

SQM to No of boards

Horeal 3.6m Decking

$\text{SQM} / 0.54 = \text{No of boards}$

Horeal 5m Decking

$\text{SQM} / 0.75 = \text{No of boards}$

Arcadian 140mm

$\text{SQM} / 0.52 = \text{No of boards}$

Arcadian 235mm

$\text{SQM} / 0.87 = \text{No of boards}$

Range	10m2	20m2	30m2	40m2	50m2
Horeal 3.6m Board	19	38	56	75	93
Horeal 5m Board	14	24	40	54	67
Arcadian 140mm	20	39	58	77	97
Arcadian 235mm	12	23	35	46	58

Note: Always round up the number of boards, and include +5%-10% for wastage

What should I use for my subframe?

Decking subframes should be constructed of suitable materials including treated timber, aluminium, steel or plastic battens capable of supporting an installed deck and expected traffic/loads.

Can I use timber subframe?

For timber sub-frames, we recommend 6x2 treated timber joists for external joist work and 4x2 for internal joists. Protective deck tape is recommended for joist protection.

What centres should I use?

Joists should be at maximum 300mm centres with noggins no more than 600 mm centres

How do I properly support the boards?

Double joists should be installed for any end on end board joins and ensure no boards overhang a joist by more than 10mm.

Do I need to allow a slope for drainage?

The sub-frame should be installed to allow a 1:100 fall for water run-off.

What direction do I install joists?

Joists should run perpendicular to orientation of board installation.

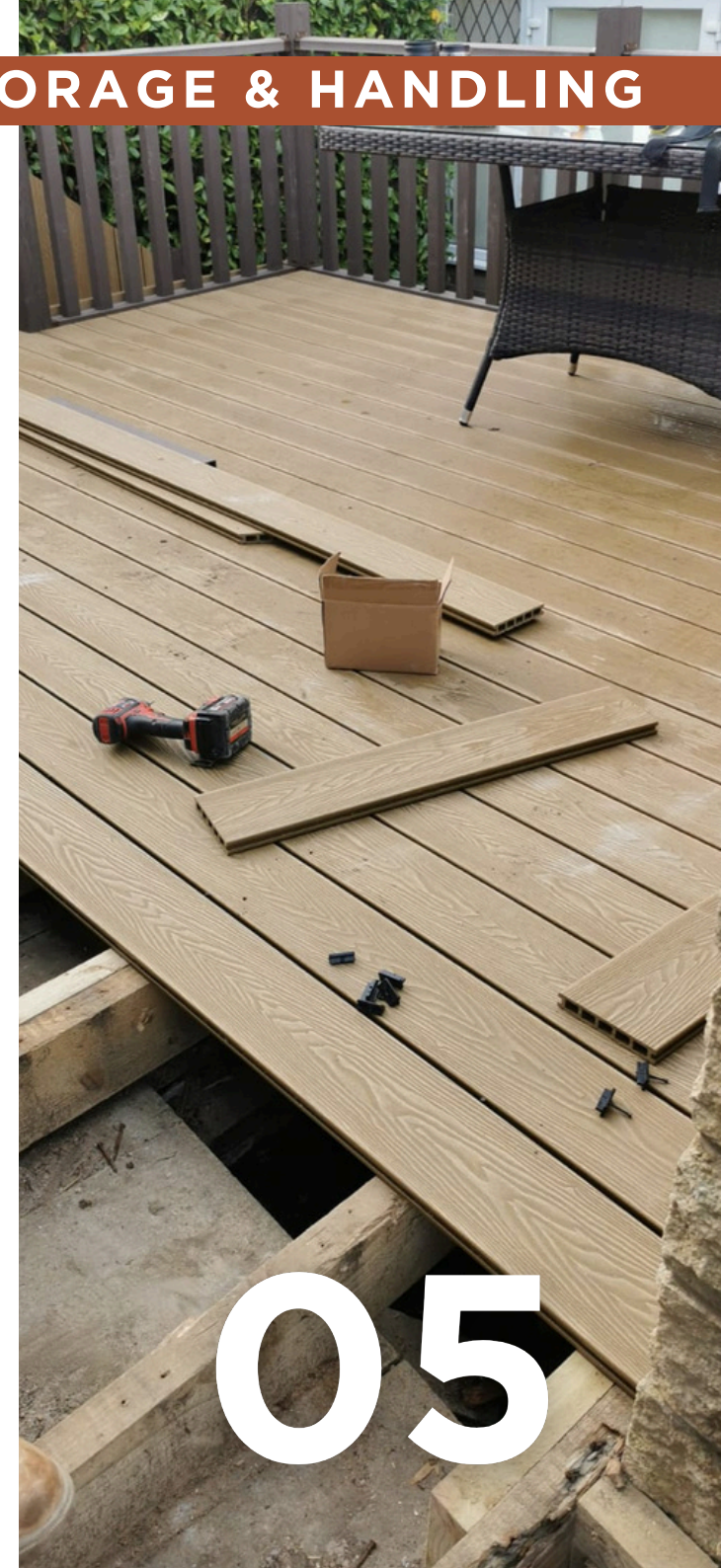
How do I store my decking before installation?

Do:

- ✓ Keep all boards neatly stacked to avoid them falling and becoming damaged.
- ✓ It is crucial to keep all boards flat and on a level surface. This will avoid causing the boards to bow or bend.
- ✓ Boards should be stored off the floor on supportive planks at max 300 centres.
- ✓ Cover to protect external boards from weathering / UV fade.

Don't:

- ✗ DO NOT store directly on the ground.
- ✗ Do not drag the boards on rough surfaces or across other boards. This could cause damage to the boards.
- ✗ Do not leave metal or tools on the boards for long periods.
- ✗ Do not leave uncovered.



Why do I need to leave expansion gaps?

DenaDeck Composite decking will expand and contract as the climate changes. If there is no room for the boards to expand, they will push against each other or the wall and eventually they will develop cracks.

What expansion gap do you need to leave around perimeter?

10-12mm gap required around perimeter boards to allow for expansion.

What expansion gap is required board to board?

End on end or 45 degree mitre joins require minimum 5mm to 8mm expansion gap for 3.6m boards and 8-10mm for 5m length boards (when installed in cold winter months)

In hot/ summer months a narrower gap of 3mm - 5mm (Horeal 3.6m board) and 5mm - 7mm (Horeal 5m board) gap is recommended.

Can I install my boards straight away?

Boards should be left outside for 24 hours prior to fitting to allow for boards to acclimatise before fitting.



What screws do I use?

We recommend using manufacturer supplied T-Fixings and screws as designed to meet board dimensions and part of decking warranty.

How many fixings do I need to use?

On 300mm centres - **12 fixings per Horael 3.6m board** and **16-17 per Horael 5m board**.

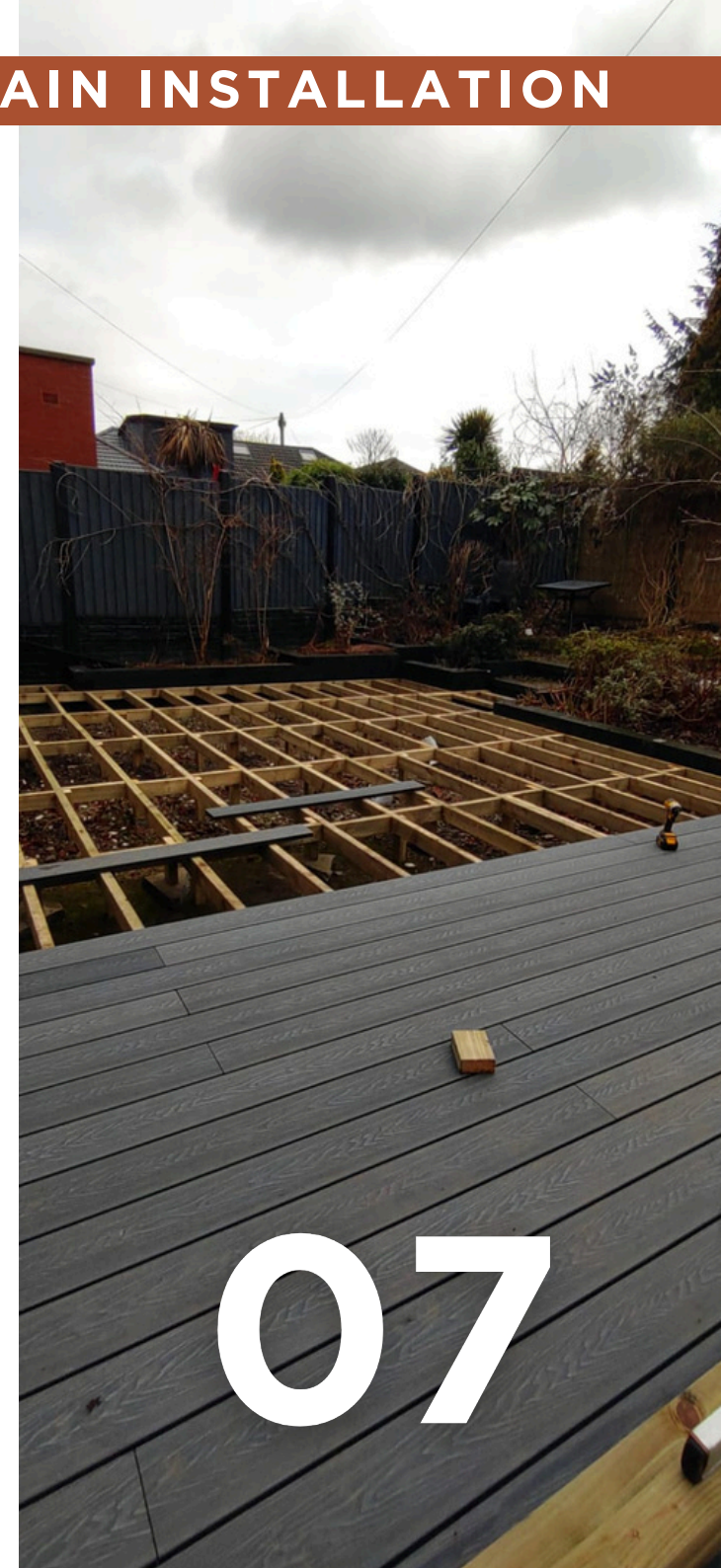
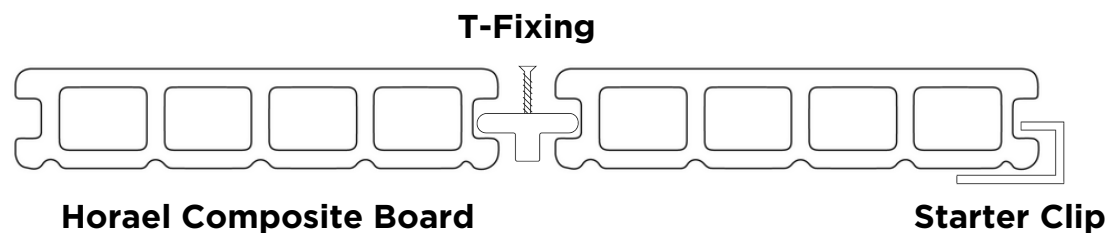
Do I need to add extra fixings on joins?

End on End Joins - fixing required at the end of each board - no overlapped fixings.

How many starter / end clips per board?

Starter/End Clips 12 per board/16-17 per board on Horael 3.6m and Horael 5m boards respectively.

Example of fitting:



How do I clean my composite decking?

Your deck never needs to be painted or sealed but it is important to have a cleaning programme. Brush and remove any debris, and spot clean any stains.

How do I clean if stained?

Composite decking boards can stain if exposed to harsh staining fluids such as rust and should be routinely cleaned with hot and soapy water to prevent harsh materials soaking into the boards.

How can I fixed a scratched board?

Being constructed of wood and HDPE, DenaDeck Composite Boards are open to scratching from sharp edges - be sure to ensure any furniture placed on composite decks are suitable and take measures to protect the deck from any sharp edges. Should a scratch occur, lightly sanding the area is the best method of removal.

What will I need to clean my decking?



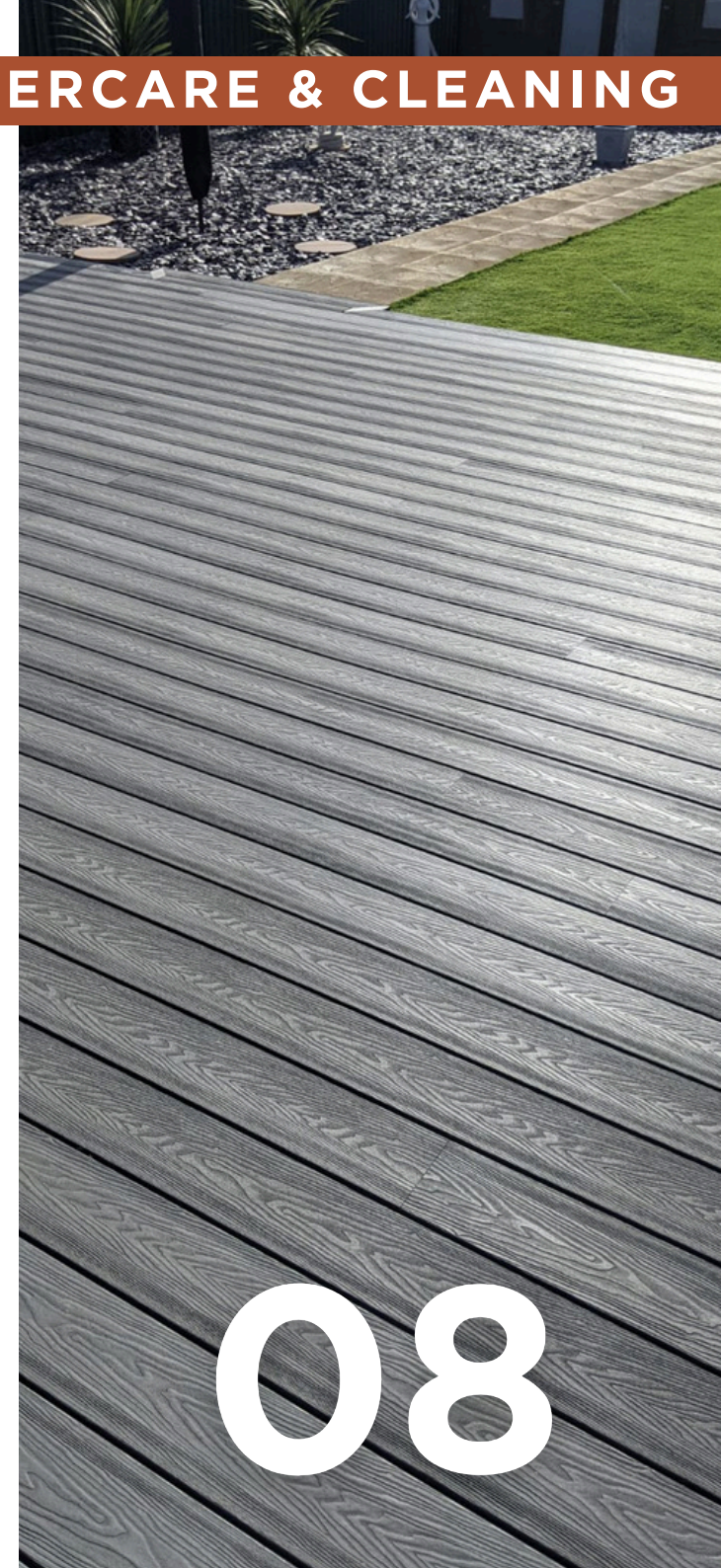
BRUSH



HOT WATER & SOAP



HOSEPIPE



How do I secure the trim?

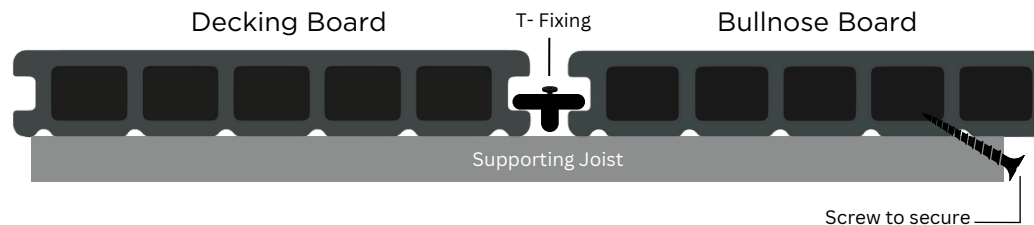
To secure corner trims, we recommend using a strong flexible adhesive for a seamless finish.

What is a bullnose board?

Bullnose boards are a specific finishing board made with a rounded edge. These are ideal for giving a seamless finish which matches the colour of your deck perfectly.

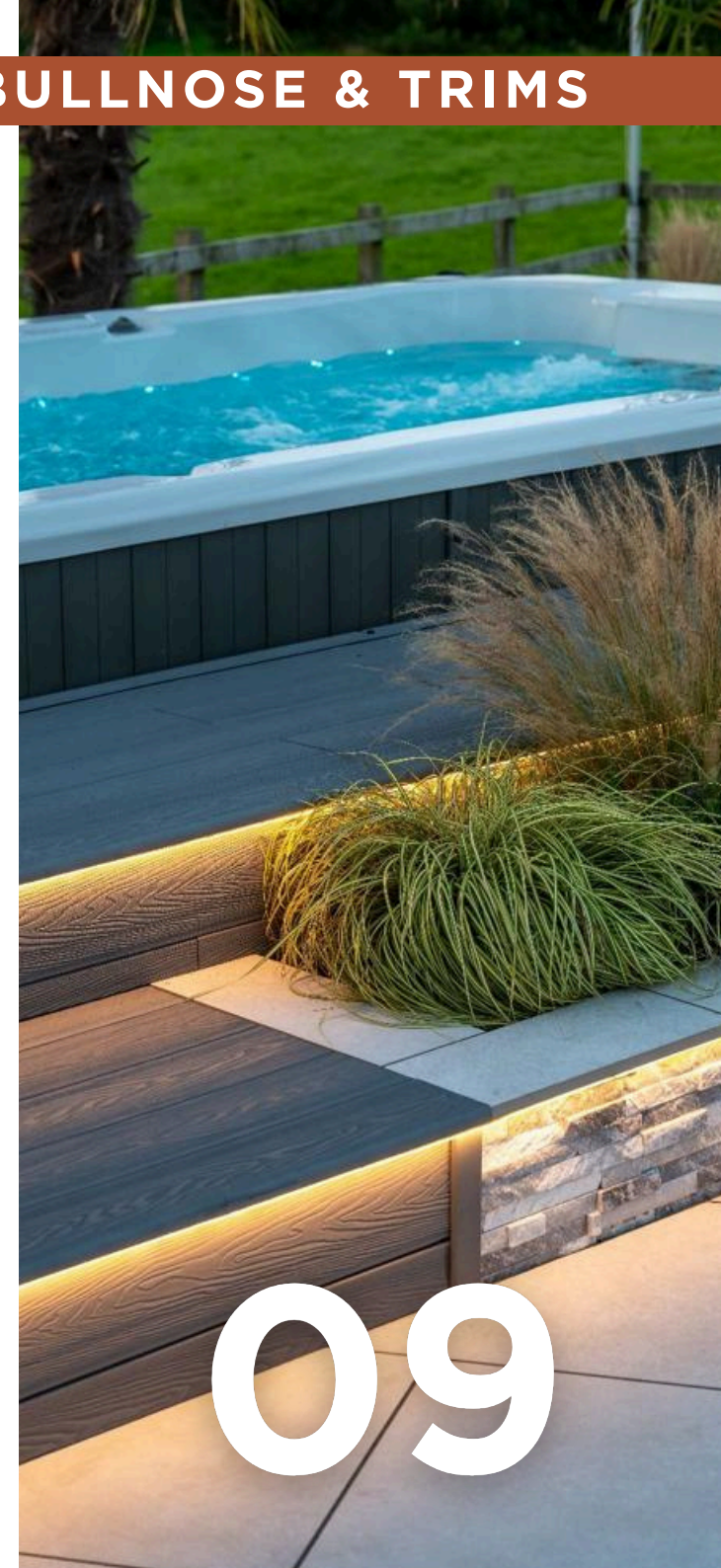
How do I install bullnose boards?

Bullnose boards can be fitted using a screw securing the joist and board, angled upwards. Alternatively, you can use a L bracket to secure to the subframe.



How do I calculate no of bullnose/trims ?

Calculate the total linear metres of bullnose board coverage required and divide by the length of the board and round up to next whole number.



UV Fade

Composite Decking boards have natural tree fibres exposed to weathering and UV light.

Composite Boards will weather and fade in the initial few months of installation with the settled colour no darker than the internal colour of a cut board (Woodgrain side will always start darker to allow for this natural process).

Fade can happen at various rates and extents due to the natural variation of materials in the boards.

Be sure to regularly move furniture in initial months to allow for even weathering.

Warranty

All composite decking boards are supported by a 10 year manufacturer warranty against cracking, splitting, rotting and excessive fade but must be fitted as per the fitting guidelines to ensure the boards have the structural support and ventilation required to perform.

